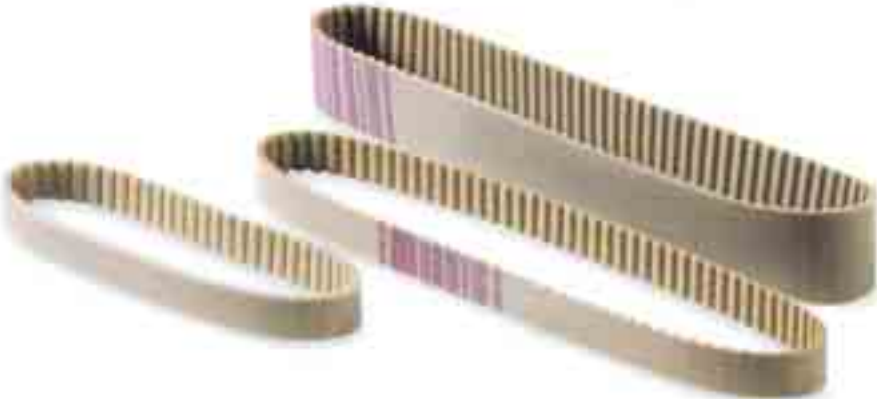
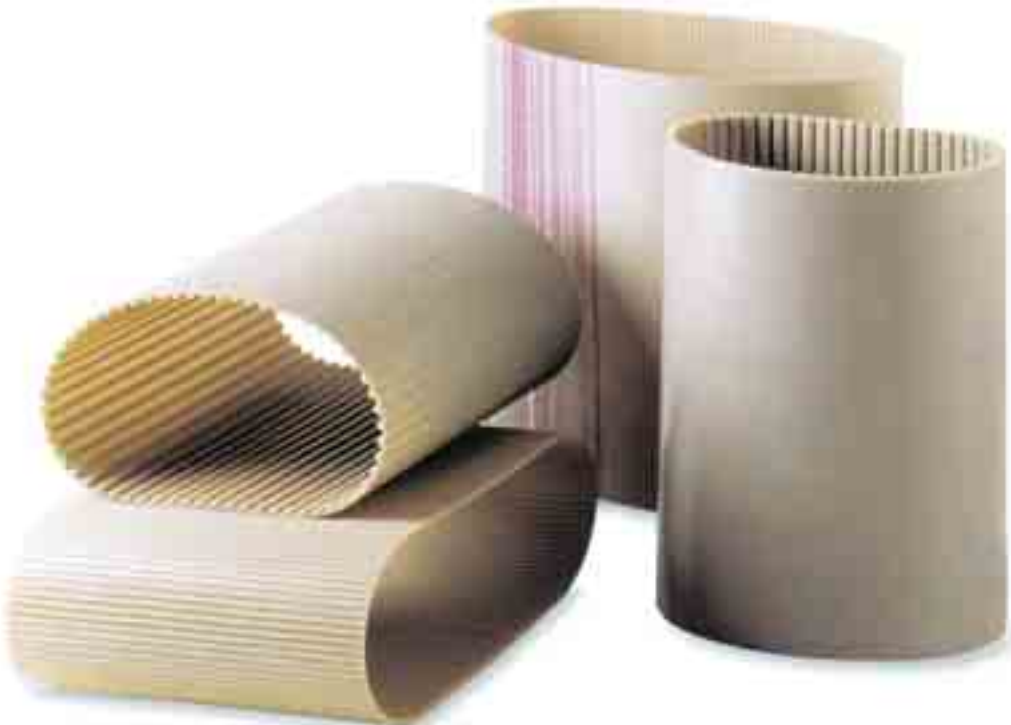
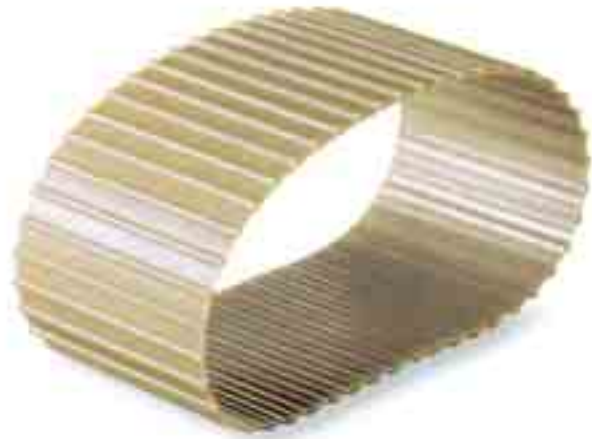


RO-DRIVE PU™ Endless timing belts.....	Page	3
RO-DRIVE PU™ Open-ended timing belts.....	"	7
RO-DRIVE PU™ Special lengths.....	"	11
ROFLEX PU™ Endless multi-rib belts.....	"	15
ROFLEX PU™ Endless flat belts.....	"	17
SPECIAL: Special pitches, coating and back profiles custom made	"	19

RO-DRIVE PU™ Endless timing belts





RO-DRIVE PU endless timing belts are manufactured by a unique thermo-set moulding process.

The high-grade polyurethane gives excellent abrasion and shear resistance, combined with a variety of graded steel cords, ensuring high strength and elongation stability. The result is a timing belt with excellent dimensional stability. RO-DRIVE PU moulded timing belts are manufactured to a tight tolerance range, which assures consistent length and thickness.

The combination of these factors results in RO-DRIVE PU, performing to the highest physical and chemical levels.

RO-DRIVE PU endless belts are suitable for high power and precision motion control, even at high speeds.

These belts have the following features:

MECHANICAL features

- Consistent dimensional stability
- Low pre-tension
- Low noise
- High abrasion resistance
- Low maintenance
- High flexibility
- Linear speeds of up to 80 m/sec

CHEMICAL features

- Good resistance to
 - Ageing
 - Hydrolysis
 - UVA rays
 - Ozone
- Working temperature range -30° C to +80° C
(Up to +110° C for short periods)
- High resistance to oil, fat and grease
- Good resistance to most acids and alkalis



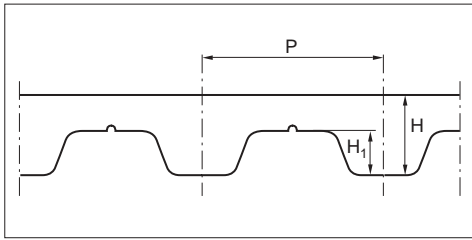
RO-DRIVE PU endless belts perform especially well on light, synchronised and stepped drives, in office automation and domestic appliance applications.



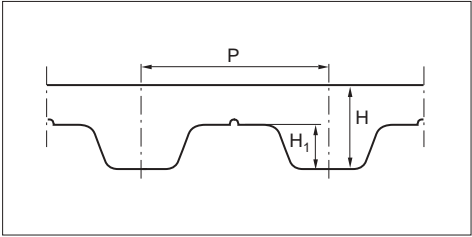
RO-DRIVE PU™ Endless timing belts

AT 5		AT 10		MXL		XL		L		H	
Standard width (mm)		Standard width (mm)		Standard width (mm)		Standard width (mm)		Standard width (mm)		Standard width (mm)	
6/8/10/12/16/20/25		10/12/16/20/25/32/50/75		3.2/4.8/6.4		6.4/7.9/9.5		12.7/19.1/25.4		19.1/25.4/38.1 50.8/76.2	
AT 5		AT 10		MXL		XL		L		H	
Code	Pitch length (mm)	Code	Pitch length (mm)	Code	Pitch length (mm)	Code	Pitch length (mm)	Code	Pitch length (mm)	Code	Pitch length (mm)
225	225	370	370	80055	111.7	60	152.4	86	218.6	230	584.2
255	255	500	500	80057	115.8	70	177.8	124	314.3	240	609.6
280	280	560	560	80060	121.9	76	193.0	150	381.0	270	685.8
300	300	600	600	80070	142.2	80	203.2	187	476.2	300	762.0
330	330	610	610	80072	146.3	90	228.6	202	514.4	330	838.2
340	340	660	660	80075	152.4	100	254.0	210	533.4	360	914.4
375	375	700	700	80076	154.4	110	269.4	225	571.5	390	990.6
390	390	730	730	80079	160.5	120	304.8	240	609.6	420	1066.8
420	420	780	780	80080	162.5	130	330.2	255	647.7	450	1143.0
450	450	800	800	80082	166.6	134	340.3	270	685.8	480	1219.2
455	455	840	840	80088	178.8	140	355.6	285	723.9	510	1295.4
500	500	880	880	80091	184.9	150	381.0	300	762.0		
525	525	890	890	80092	186.9	160	406.4	322	817.9	P	12.7
545	545	920	920	80096	195.1	170	431.8	345	876.3	H	4.30
600	600	960	960	80101	205.2	180	457.2	367	933.4	H ₁	2.29
610	610	980	980	80102	207.2	190	482.6	390	990.6		
660	660	1000	1000	80103	209.2	194	492.7	420	1066.8		
710	710	1010	1010	80105	213.3	200	508.0	450	1143.0		
720	720	1050	1050	80110	223.5	210	533.4	480	1219.2		
750	750	1080	1080	80114	231.6	220	558.8	510	1295.4		
780	780	1100	1100	80118	239.7	230	584.2	540	1371.6		
825	825	1150	1150	80120	243.8	240	609.6	570	1447.8		
860	860	1200	1200	80130	264.1	250	635.0	600	1524.0		
975	975	1210	1210	80132	268.2	260	660.4			P	9.525
1050	1050	1220	1220	80135	274.3	270	685.5			H	3.60
1125	1125	1230	1230	80140	284.4	288	731.5			H ₁	1.65
1500	1500	1240	1240	80145	294.6	290	736.6				
2000	2000	1250	1250	80150	304.8	300	762.0				
		1280	1280	80155	314.9	356	904.2				
P	5.0	1300	1300	80175	355.6	414	1051.5				
H	2.7	1320	1320	80190	386.5	450	1143.0				
H ₁	1.2	1350	1350	80200	406.8	566	1437.6				
		1360	1360	80221	449.1						
		1400	1400	80256	520.1						
		1420	1420	80280	568.9						
		1480	1480	80285	579.1						
		1500	1500	80308	625.8						
		1600	1600	80332	674.6						
		1700	1700	80352	715.2						
		1720	1720	80360	731.5						
		1800	1800	80395	802.6						
		1860	1860	80405	822.9						
		1940	1940	80412	837.1						
				80432	877.8						
				80454	922.5						
				80485	985.5						
		P	10.0								
		H	4.5								
		H ₁	2.5	P	2.032						
				H	1.2						
				H ₁	0.51						

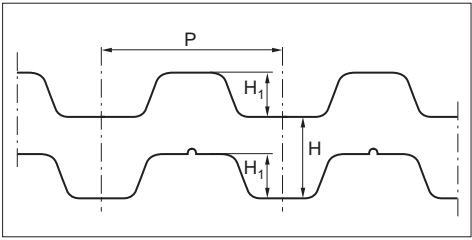
T2 - T2.5 - T5 - T10



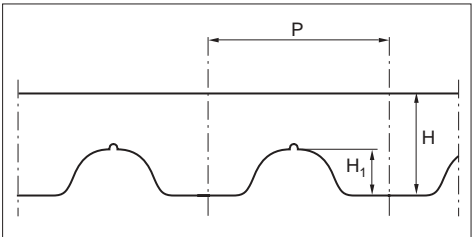
T5 - T10* available without nose



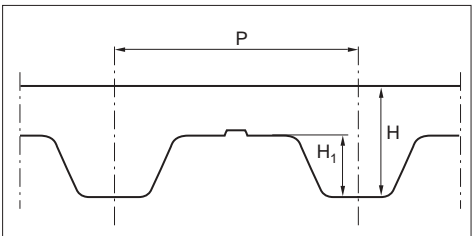
T2.5DL - T5DL - T10DL



AT5 - AT10



MXL - XL - L - H



T 2.5	T 5	T 10	T 2.5 DL
Standard width (mm)	Standard width (mm)	Standard width (mm)	Standard width (mm)
4/6/8/10/12	6/8/10/12/16/20/25	10/12/16/20/25/32/50/75	4/6/8/10/12

T 2.5		T 5		T 10		T 2.5 DL	
Code	Pitch length (mm)	Code	Pitch length (mm)	Code	Pitch length (mm)	Code	Pitch length (mm)
120	120	120	120	260	260	457,5 DL	457,5
145	145	150	150	340	340		
160	160	165	165	370	370		
177.5	177.5	180	180	390	390		
180	180	185	185	400	400		
182.5	182.5	200	200	410	410		
200	200	210	210	440	440		
230	230	215	215	450	450		
245	245	220	220	480	480		
265	265	225	225	500	500		
285	285	245	245	530	530		
290	290	250	250	560	560		
305	305	255	255	600	600		
317.5	317.5	260	260	600*	600*		
330	330	270	270	610	610		
380	380	280	280	630	630		
420	420	295	295	630*	630*		
480	480	305	305	660	660		
500	500	330	330	680	680		
540	540	340	340	690	690		
600	600	350	350	700	700		
620	620	355	355	720	720		
650	650	365	365	730	730		
680	680	390	390	750	750		
700	700	400	400	780	780		
780	780	410	410	810	810		
880	880	420	420	840	840		
915	915	455	455	880	880		
950	950	460	460	890	890		
1185	1185	475	475	900	900		
		480	480	900*	900*		
		500	500	910	910		
		510	510	920	920		
		515*	515*	920*	920*		
		525	525	960	960		
		545	545	970	970		
		550	550	980	980		
		560	560	1010	1010		
		560*	560*	1080	1080		
		575	575	1110	1110		
		590	590	1140	1140		
		610	610	1150	1150		
		620	620	1210	1210		
		630	630	1240	1240		
		650	650	1250	1250		
		660	660	1300	1300		
		690	690	1320	1320		
		720	720	1350	1350		
		750	750	1390	1390		
		765	765	1400	1400		
		780	780	1420	1420		
		815	815	1450	1450		
		830	830	1460	1460		
		840	840	1500	1500		
		860	860	1560	1560		
		885	885	1610	1610		
		900	900	1750	1750		
		940	940	1780	1780		
		990	990	1880	1880		
		1075	1075	1960	1960		
		1100	1100	2250	2250		
		1160	1160				
		1200	1200				
		1215	1215				
		1275	1275				
		1280	1280				
		1315	1315				
		1355	1355				
		1380	1380				
		1580	1580				
		1955	1955				

P	2.5
---	-----

H	1.3
---	-----

H ₁	0.7
----------------	-----

T 2	
Standard width (mm)	
4/6/8/10/12	

T 2	
Code	Pitch length (mm)
180	180
200	200
288	288

P	2
---	---

H	1.1
---	-----

H ₁	0.5
----------------	-----

P	5.0
---	-----

H	2.2
---	-----

H ₁	1.2
----------------	-----

T 5 DL	
Standard width (mm)	
6/8/10/12/16/20/25	

T 5 DL	
Code	Pitch length (mm)
410 DL	410
460 DL	460
590 DL	590
620 DL	620
750 DL	750
815 DL	815
860 DL	860
940 DL	940
1100 DL	1100

P	5.0
---	-----

H	2.2
---	-----

H ₁	1.2
----------------	-----

T 10 DL	
Standard width (mm)	
10/12/16/20/25/32/50/75	

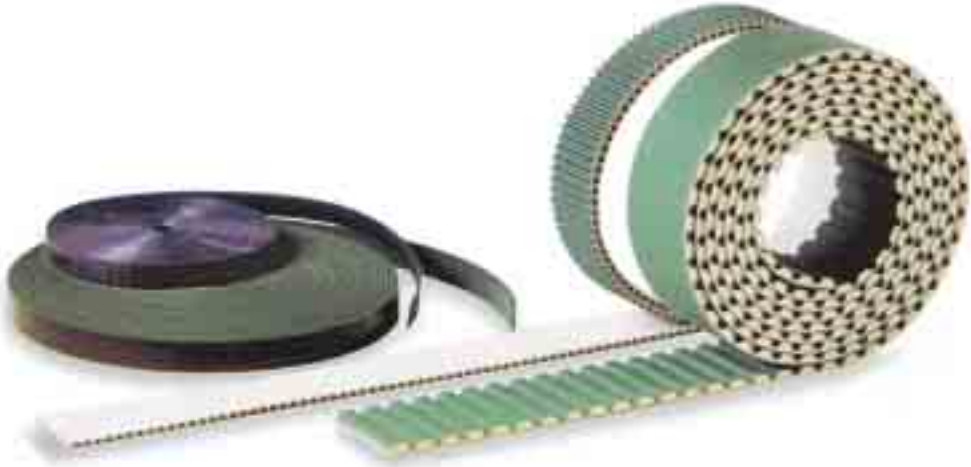
T 5 DL	
Code	Pitch length (mm)
260 DL	260
530 DL	530
630 DL	630
660 DL	660
720 DL	720
840 DL	840
920 DL	920
980 DL	980
1210 DL	1210
1240 DL	1240
1250 DL	1250
1320 DL	1320
1350 DL	1350
1420 DL	1420
1610 DL	1610
1880 DL	1880

P	10.0
---	------

H	4.5
---	-----

H ₁	2.5
----------------	-----

RO-DRIVE PU™ Open-ended timing belts





RO-DRIVE PU open-ended timing belts are manufactured in thermoplastic polyurethane that gives superior wear and abrasion resistance. Various grades of steel cords offer good running characteristics, even with high tractive loads. Manufactured to tight tolerances, RO-DRIVE PU open-ended delivers reliability and excellent dimensional stability. The addition of a Nylon coating on the teeth and/or back of the belt during production, enhances the running properties for specific applications. An extra thickness of polyurethane is also possible on the back of the belt, offering extra protection against aggressive or heavy products.

RO-DRIVE PU open-ended timing belts offers the following features:

MECHANICAL features

- Consistent dimensional stability
- Low pre-tension
- Low noise
- High abrasion resistance
- Low maintenance
- High flexibility
- Linear speeds up to 80 m/sec
- High precision linear positioning

CHEMICAL features

- Good resistance to
 - Ageing
 - Hydrolysis
 - UVA rays
 - Ozone
- Working temperature range -30^o C to +80^o C
(Up to +110^o C for short periods)
- High resistance to oil, fat and grease
- Good resistance to most acids and alkalis
- Compatible for fabrication with other thermoplastic materials

RO-DRIVE PU open-ended is available as open length rolls or as endless jointed belts.

OPEN LENGTH belts

These are manufactured as continuous lengths with the reinforcement in a parallel configuration. Standard roll lengths are 50 or 100 metres. Other lengths available on request.

RO-DRIVE PU belts are manufactured as an open length and are normally used in linear motion drives.

ENDLESS JOINTED belts

By jointing using the thermoplastic properties of the open length belt, endless belts can be produced to any length by welding. The finished joint is resistant to fatigue from flexing and tension, due to the unique symmetrical V-shaped pattern of the joint.

Endless jointed belts are suitable for conveying applications, particularly when indexing and/or positive drive is required. The supplementary application of flights, profiles and coating is possible to suit specific applications.

RO-DRIVE PU open-ended is also available with alternative reinforcement cords such as Kevlar (K), High Flex (HF), High Performance (HP) and High Performance Flex (HPF).



RO-DRIVE PU™ Open-ended timing belts

STD 5M		STD 8M	
Standard width (mm)		Standard width (mm)	
10		10	
20		12	
25		15	
50		20	
		30	
		50	
		85	
P	5	P	8.0
H	3.4	H	5.1
H ₁	1.91	H ₁	3.05

RPP5		RPP8		RPP14	
Standard width (mm)		Standard width (mm)		Standard width (mm)	
10		10		40	
15		15		55	
25		20		85	
30		30		115	
50		50		150	
		85			
		100			
P	5	P	8	P	14
H	3.8	H	5.4	H	10.0
H ₁	2.0	H ₁	3.2	H ₁	6.0

T 5		T 10		T 20	
Standard width (mm)		Standard width (mm)		Standard width (mm)	
6		12		25	
10		16		32	
16		25		50	
25		32		75	
32		50		100	
50		75		150	
75		100			
100		150			
		200*			
P	5	P	10	P	20
H	2.2	H	4.5	H	8.0
H ₁	1.2	H ₁	2.5	H ₁	5.0

ATG 10 K13		ATG 20 K13		HG K13	
Standard width (mm)		Standard width (mm)		Standard width (mm)	
32		150		38.1	
50				50.8	
75				76.2	
100				101.6	
150					
P	10.0	P	20	P	12.7
H	4.5	H	8.0	H	4.3
H ₁	2.5	H ₁	5.0	H ₁	2.29
B	13	B	13	B	13
h	6.5	h	6.5	h	6.5

*Only with kevlar cords and 50% cords less

P1		P2		P4	
Standard width (mm)		Standard width (mm)		Standard width (mm)	
10		25		20	
20		50		50	
		75		55	
		100		100	
H	1.0	H	2.0	H	4

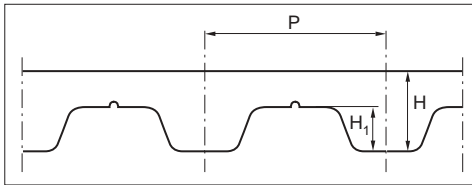


NFB and NFT

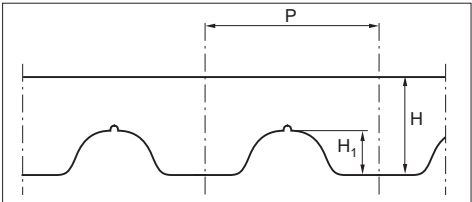


Joined belt

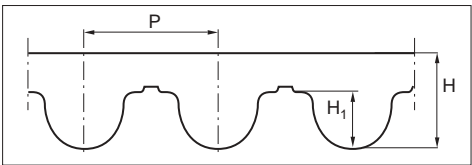
T5 - T10 - T20



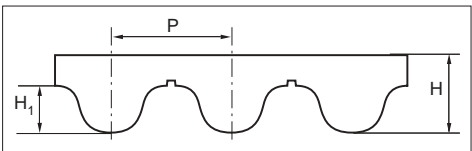
AT3 - AT5 - AT10 - AT20



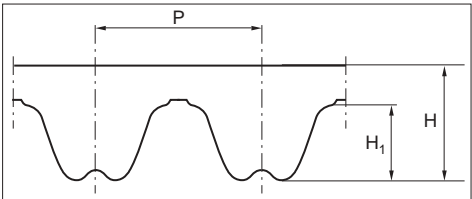
MTD3M - MTD5M - MTD8M - MTD14M



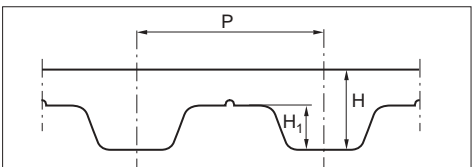
STD 5M - STD 8M



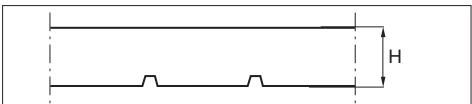
RPP5 - RPP8 - RPP14



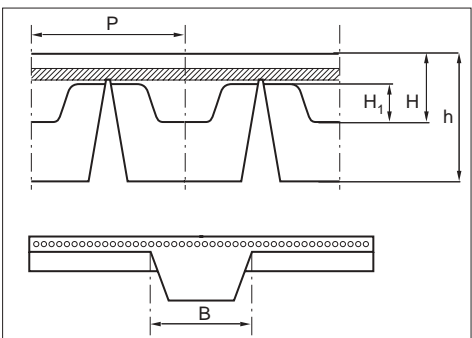
XL - L - H - XH



P1 - P2 - P4



TG5-TG10-TG20-ATG10-ATG20-HG



MTD3M	MTD5M	MTD8M	MTD14M
Standard width (mm)	Standard width (mm)	Standard width (mm)	Standard width (mm)
10	10	10	25
20	15	15	40
25	25	20	55
50	50	30	85
		50	100
		85	115
		100	

P	3	P	5	P	8	P	14
H	2.2	H	3.6	H	5.6	H	10.0
H ₁	1.13	H ₁	2.1	H ₁	3.4	H ₁	6.1

XL	L	H	XH
Standard width (mm)	Standard width (mm)	Standard width (mm)	Standard width (mm)
0.25	0.37	0.50	0.50
0.31	0.50	0.75	1.00
0.37	0.75	1.00	1.50
0.50	1.00	1.50	2.00
1.00	1.50	2.00	3.00
1.50	2.00	3.00	4.00
2.00	4.00	4.00	6.00
		8.00*	

P	5.08	P	9.525	P	12.7	P	22.225
H	2.30	H	3.60	H	4.30	H	11.2
H ₁	1.27	H ₁	1.90	H ₁	2.29	H ₁	6.35

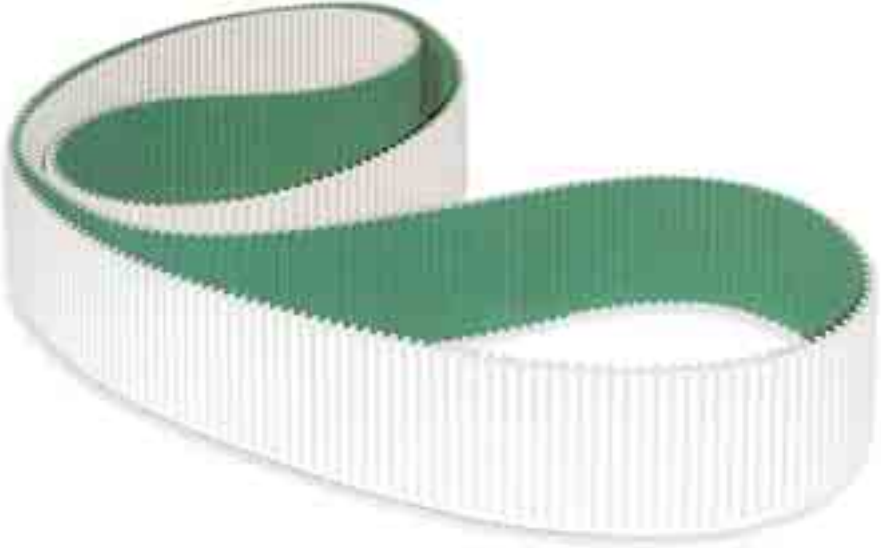
AT 3	AT 5	AT 10	AT 20
Standard width (mm)	Standard width (mm)	Standard width (mm)	Standard width (mm)
10	6	16	25
20	10	25	32
25	16	32	50
50	25	50	75
	32	75	100
	50	100	150
	75	150	200
	100		

P	3	P	5	P	10	P	20
H	1.9	H	2.7	H	4.5	H	8.0
H ₁	1.1	H ₁	1.2	H ₁	2.5	H ₁	5.0

TG5 K6	TG10 K6	TG10 K13	TG20 K13
Standard width (mm)	Standard width (mm)	Standard width (mm)	Standard width (mm)
25	50	25	50
32		32	75
50		50	100
		75	
		100	

P	5	P	10	P	10	P	20
H	2.2	H	4.5	H	4.5	H	8.0
H ₁	1.2	H ₁	2.5	H ₁	2.5	H ₁	5.0
B	6	B	6	B	13	B	13
h	4	h	4	h	6.5	h	6.5

RO-DRIVE PU™ Special lengths





RO-DRIVE PU special lengths timing belts are manufactured in thermoplastic polyurethane with continuous spiral steel cords. RO-DRIVE PU belts are truly endless, enabling them to deliver exceptional performance. They are especially suited for power transmission, conveying high loads at high speeds (up to 10.000 Rpm). The addition of nylon coating on the teeth improves the running properties for specific applications and reduces the noise frictional coefficient. In addition, an extra thickness of special coating is also possible on the back of the belt thus offering extra protection against aggressive or heavy products.

RO-DRIVE PU TIMING BELTS ARE AVAILABLE IN LENGTHS FROM 1.500 TO 22.700 mm.

**RO-DRIVE PU special lengths
Special constructions:**

- High flex cords
- (NFT) nylon fabric on the teeth
(Available from 1.900 mm long)
- Custom milling, grinding and drilling to specification
- Additional continuous coatings on the back of the belt in:
 - PUR 85⁰ ShA
 - Tenax 50⁰ ShA
 - Linatex 40⁰ ShA
 - Yellow PUR 60⁰ ShA
 - Grey PUR 60⁰ ShA
 - Neoprene rubber 70⁰ ShA

Other hardness'es available on request.



RO-DRIVE PU™ Special lengths



AVAFC - PU 85 shore A, linead on back.



NFT - Nylon fabric on teeth low friction and noise.

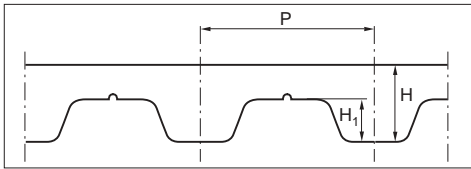
T5/T5DL		T10/T10DL		T20/T20DL	
Standard width (mm)		Standard width (mm)		Standard width (mm)	
10		10		10	
16		16		16	
25		25		25	
32		32		32	
50		50		50	
75		75		75	
100		100		100	
150		150		150	
P	5	P	10	P	20
H	2.2	H	4.5	H	8.0
H ₁	1.2	H ₁	2.5	H ₁	5.0

AT5/AT5DL		AT10/AT10DL		AT20/AT20DL	
Standard width (mm)		Standard width (mm)		Standard width (mm)	
10		10		10	
16		16		16	
25		25		25	
32		32		32	
50		50		50	
75		75		75	
100		100		100	
150		150		150	
P	5	P	10	P	20
H	2.7	H	4.5	H	8.0
H ₁	1.2	H ₁	2.5	H ₁	5.0

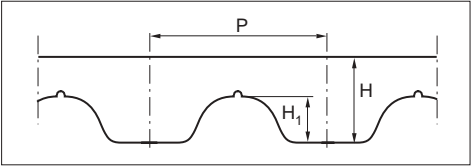
RPP5/RPP5DL		RPP8/RPP8DL		RPP14/RPP14DL	
Standard width (mm)		Standard width (mm)		Standard width (mm)	
10		10		10	
15		15		15	
20		20		20	
25		25		25	
50		50		50	
85		85		85	
100		100		100	
150		150		150	
P	5	P	8	P	14
H	3.8	H	5.4	H	10.0
H ₁	2.0	H ₁	3.20	H ₁	6.0

XL/XLDL		L/LDL		H/HDL		XH/XHDL	
Standard width (mm)		Standard width (mm)		Standard width (mm)		Standard width (mm)	
19.53		19.53		19.53		19.53	
12.7		12.7		12.7		12.7	
19.1		19.1		19.1		19.1	
25.4		25.4		25.4		25.4	
38.1		38.1		38.1		38.1	
50.8		50.8		50.8		50.8	
76.2		76.2		76.2		76.2	
101.6		101.6		101.6		101.6	
152.4		152.4		152.4		152.4	
P	5.08	P	9.525	P	12.7	P	22.225
H	2.3	H	3.6	H	4.3	H	11.2
H ₁	1.27	H ₁	1.9	H ₁	2.29	H ₁	6.35

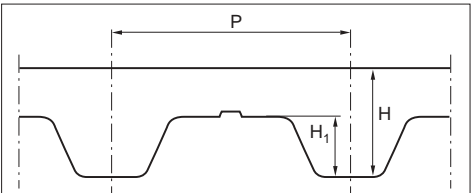
T5-T10-T20



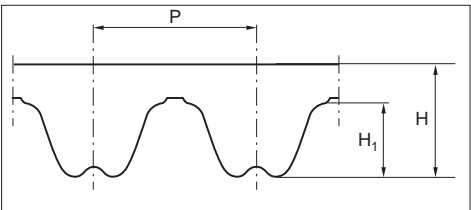
AT5-AT10-AT20



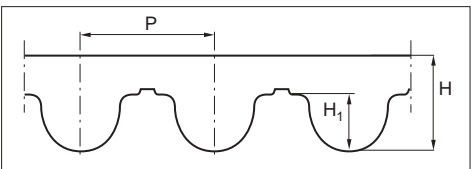
XL-L-H-XH



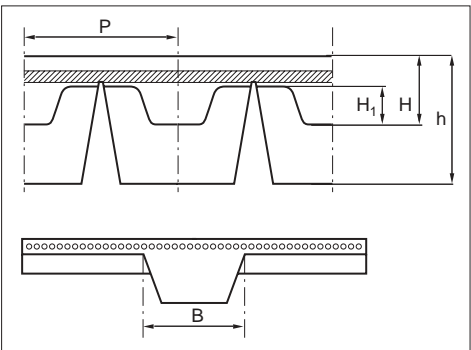
RPP5-RPP8-RPP14



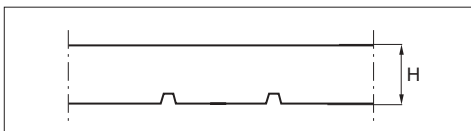
MTD8M



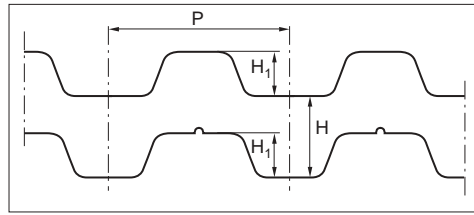
ATG10



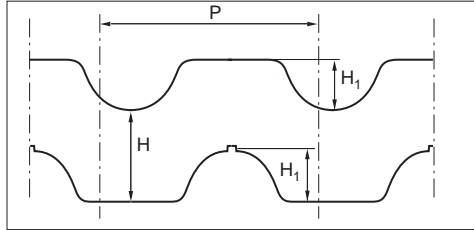
P2



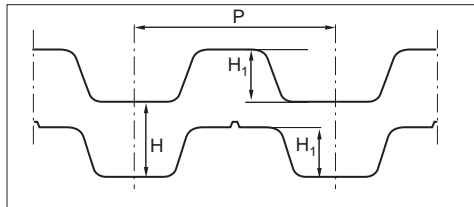
T5DL-T10DL-T20DL



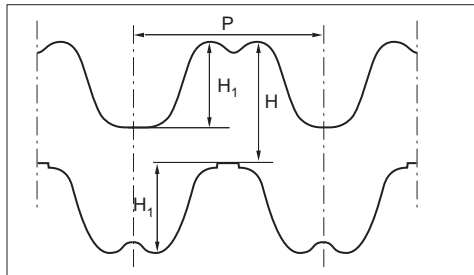
AT5DL-AT10DL-AT20DL



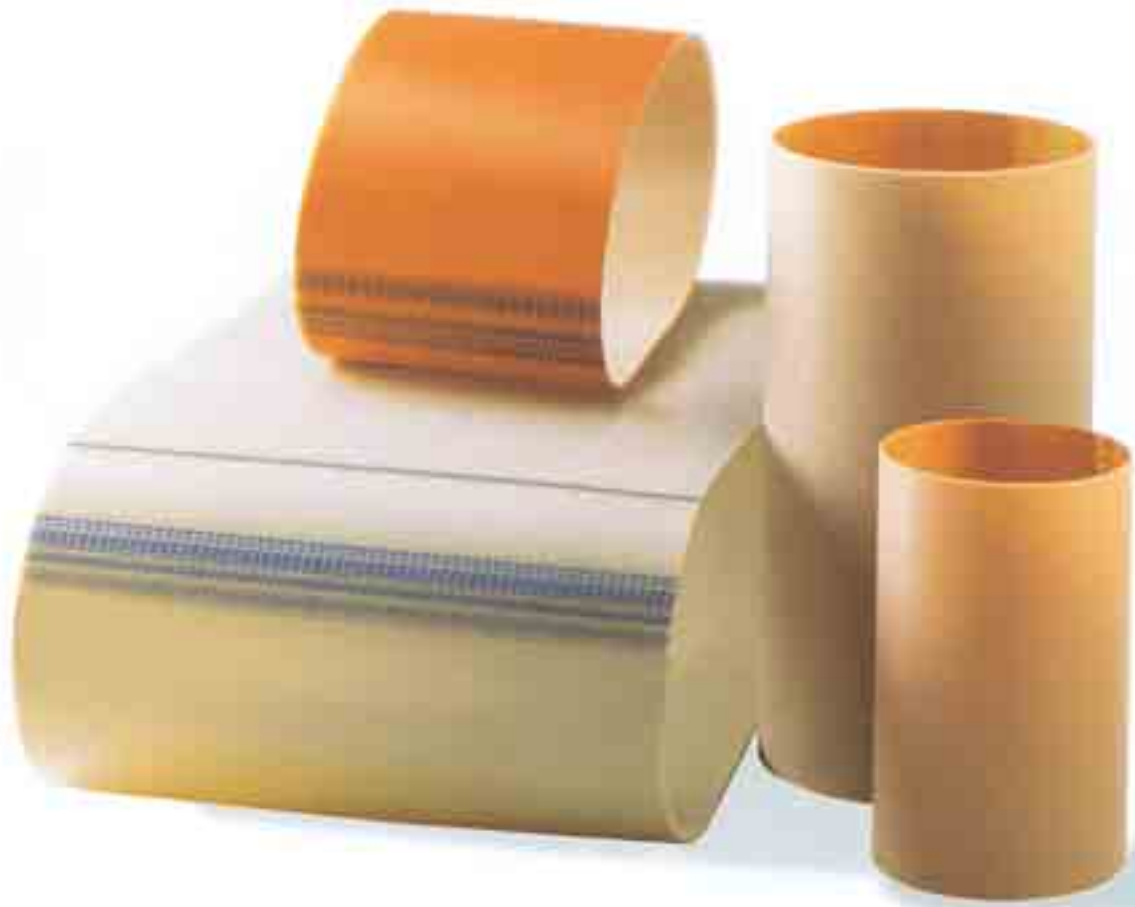
XLDL-LDL-HDL-XHDL



RPP5DL-RPP8DL-RPP14DL



	P2	ATG10 K13	MTD8M
	Standard width (mm)	Standard width (mm)	Standard width (mm)
	25	10	10
	50	16	16
	75	25	25
	100	32	32
	150	50	50
		75	75
		100	100
		150	150
P	2.0	P 10	P 8
		H 4.5	H 5.6
		H ₁ 2.5	H ₁ 3.4
		B 13	
		h 6.5	





ROFLEX PU belts are manufactured in polyurethane with polyester high tension cords, which combine the high flexibility of flat belts with the power transmission capability of V-belts.

These belts have the following features:

- Dimensional stability
- High flexibility
- Small pulley diameters
- High speeds
- Excellent oil, water and ozone resistance

The main applications are:

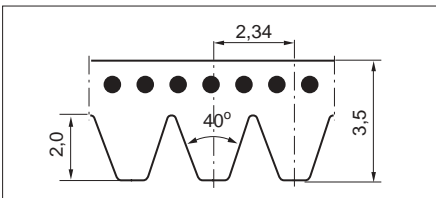
- Food processors
- Grass cutting equipment
- Electrical household appliances
- Washing machines
- Electrical tools
- Woodworking equipment
- Domestic power tools



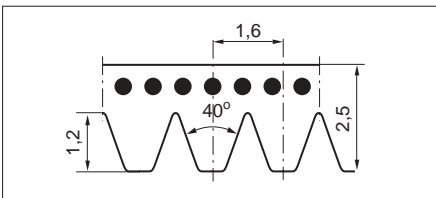
ROFLEX PU SE

are manufactured in polyurethane with a semi-elastic tension member. They can be fitted on fixed centre drives, reducing noise and vibration. The absence of a tensioning mechanism offers additional cost savings. These belts are available in a wide variety of rib pitches and lengths. (see below).

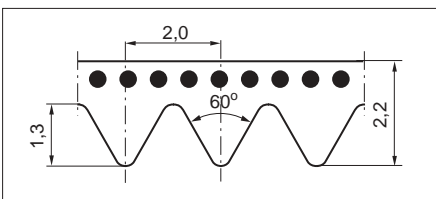
J



H



TB2



J		H	TB2
Standard length (mm) (inches)		Standard length (mm)	Standard length (mm)
220	87	178	156
271	107	217	170
275	108	223	190
278	110	227	200
288	114	229	220
304	120	295	231
330	130	330	248
345	135	340	266
356	140	375	295
360	142	389	310
381	150	400	327
392	154	485	330
406	160	507	333
431	170	588	345
444	175	602	360
457	180	609	380
471	185	650	390
483	190	768	400
508	200	935	430
558	220	1000	480
610	240	1086	510
660	260	1120	526
681	268	1163	535
711	280	1203	598
762	300	1240	630
864	340	1775	660
914	360	1976	675
953	376		725
1010	398		770
1086	428		1186
1120	440		
1163	458		
1202	474		
1239	488		
1268	500		
1397	590		

ROFLEX PU™ Endless flat belts





ROFLEX PU flat belts are truly endless and mandrel moulded, available in both polyurethane or chloroprene rubber, with polyester, aramid or cotton reinforcements.

These belts have the following features:

- High flexibility
- Small pulley diameters
- Dimensional accuracy
- High speed
- Energy efficient
- Low noise and vibration
- Low maintenance
- Good chemical and ozone resistance
- High friction surface

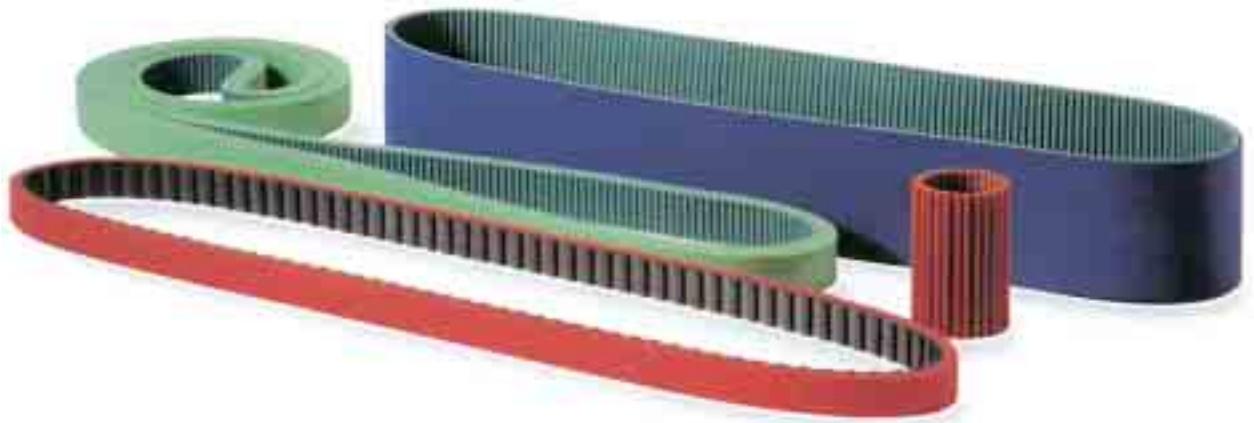
ROFLEX PU flat belts are particularly suitable for both power transmission and conveying.

	V 75	T 150	T 200
TENSILE REINFORCEMENT	polyester fabric	polyester fabric	polyester fabric
Installation tension x cm width (N) endless	150	300	400
Min. pulley dia. mm	6	15	20
Thickness mm	0.5	0.9	1.1
Standard length mm	200/3850	200/3850	200/3850
Coating material	Neoprene	Neoprene	Neoprene
Antistatic	Yes	Yes	Yes

	PU 0	PU 102	PU 108	PU 110
TENSILE REINFORCEMENT	polyester fabric	polyester fabric	polyester fabric	polyester fabric
Installation tension x cm width (N) endless	-	250	200	150
Min. pulley dia. mm	8	4	5	12
Thickness mm	0.9	1.8	0.8	1
Standard length mm	150/1200	200/2500	240/3850	200/3850
Coating material	Polyurethane	Polyurethane	Polyurethane	Polyurethane
Antistatic	No	Possible	Possible	Possible

	PU 120	PU 155	S 110
TENSILE REINFORCEMENT	polyester fabric	polyester fabric	polyester fabric
Installation tension x cm width (N) endless	350	400	125
Min. pulley dia. mm	20	25	12
Thickness mm	1.5	2	1.0
Standard length mm	200/3850	240/3850	200/3850
Coating material	Polyurethane	Polyurethane	Silicon
Antistatic	Possible	Possible	Possible

Special Any special pitches, coating and back profiles custom made



Other products

Industrial and Agricultural Belts



Through a combination of excellent raw materials and stringent quality control, ROFLEX power transmission belts are regarded as being among the best in the market.

Our extensive range covers widespread applications from industrial and agricultural machinery to household equipment. Both single and double variable-speed V-belts also constitute part of the ROFLEX range.



- **ROFLEX™** Wrapped V-belts
- **ROFLEX-X™** Raw-edge V-belts
- **ROFLEX RE-X™** Raw-edge V-belts
- **ROFLEX-VARI™** Variable speed V-belts
- **ROFLEX-JOINED™** Joined V-belts
- **ROFLEX™** Multiribbed belts
- **ROFLEX™** Double V-belts
- **ROFLEX™** Capping belts
- **ROFLEX™** Non-Fric belts
- **DANCORD™** Flat belts
- **RO-DRIVE™** Rubber timing belts
- **ROFLEX-GARDEN™** Garden and park belts

Industrial Hoses



ROULUNDS offer a wide range of hoses and tubes with widespread applications. Through close partnership with our customers, we design special hoses and tubes according to the customers' specific requirements.

Marketed under the trademark **CODAN™**, our range of industrial hoses includes:



- Air and water hoses
- Gas and welding hoses
- Alimentary hoses
- Steam hoses
- Radiator hoses
- Oil and fuel hoses
- Hydraulic hoses
- Breathing hoses
- A/C hoses
- Chemical hoses
- Material handling hoses
- Air brake hoses
- Niche hoses
- Customer-designed products

Industrial Pulleys



ROULUNDS have a wide range range of industrial pulleys, available in different diameters. Our range includes:

- V-belt pulleys: taper bush and solid hub
- Timing belt pulleys: taper bush and solid hub
- Special pulleys: manufactured according to drawing



Sales Offices

Europe

ROULUNDS RUBBER A/S

Hestehaven 51
DK-5260 Odense S
Denmark

Tel. (+45) 63 11 50 00
Fax (+45) 66 11 23 80
E-mail:
Industrial PWT: indu-agri@roulunds.dk
Automotive: autoam@roulunds.dk
www.roulunds.com

CODAN GUMMI A/S

Københavnsvej 104
DK-4600 Køge
Denmark

Tel.: (+45) 56 64 64 64
Fax: (+45) 56 64 64 21
E-mail: ha@codan.com
www.codan.com

ROULUNDS CODAN (Corby) Ltd.

8 Cronin Courtyard
Weldon South Industrial Estate
Corby, Northamptonshire NN18 8AG
UK

Tel. (+44) 1 536 20 10 10
Fax (+44) 1 536 20 53 85
E-mail: info@codan.co.uk
www.roulunds.co.uk

ROULUNDS CODAN (France) S.A.

B.P. 15, Z.I. d'Angean 'Le Parc'
60240 Chaumont-en-Vexin
France

Tel. (+33) 3 44 49 55 60
Fax (+33) 3 44 49 55 61
E-mail: rcf@roulunds.fr
www.roulunds.fr

ROULUNDS CODAN (Germany) GmbH

Laubenhof 23
D-45326 Essen
Germany

Tel.: (+49) 201 834 200
Fax: (+49) 201 834 2015
E-mail: roulunds.codan.germany@t-online.de

ROULUNDS CODAN Norge AS

Strømsveien 314
N 1081 Oslo
Norway

Tel.: (+47) 2290 6550
Fax: (+47) 2232 75 83
E-mail: firmapost@codan-gummi.no
www.roulunds.codan.no

TIC ROULUNDS (Italia) SpA

Viale delle Industrie, 9, Z.I.
35010 Ronchi di Villafranca
Padovana (PD)
Italy

Tel. (+39) 0 49 90 70 422
Fax (+39) 0 49 90 70 447
E-mail:
Industrial PWT: rg@roulunds.it
Automotive: mag@roulunds.it
www.tic-roulunds.com

DAN-BELT S.A.

Calle Agricultura 11-21 Nave 1
Poligono Industrial El Pla
08980-Sant Feliu Llobregat, Barcelona
Spain

Tel.: (+34) 93 632 7300
Fax: (+34) 93 632 7048
E-mail: danbeltsa@danbeltsa.com
www.danbeltsa.com

Asia

ROULUNDS CODAN (India) Ltd.

S-23, Green Park Extension
New Delhi 110016
India

Tel. (+91) 11 2685 8136
Fax (+91) 11 2685 8137
E-mail: roulundscodan@roulundsindia.com
www.roulundsindia.com

ROULUNDS KOREA Ltd.

137-52 Yusan-dong
Yangsan-City, Gyeongnam
Korea

Tel.: (+82) 55 380 8000
Fax: (+82) 55 386 8881
E-mail: rk@roulunds.co.kr
www.roulunds.co.kr

Americas

ROULUNDS CODAN (Mexico) S.A. De C.V.

Henry Ford 23
Fracc. Ind San Nicolás
Tlalnepantla, Edo. De México
México 54030

Tel.: (+52) 55 53 10 99 97
Fax: (+52) 55 53 10 85 10
E-mail: tod@roulundscodan.com.mx
www.roulundscodan.com.mx

